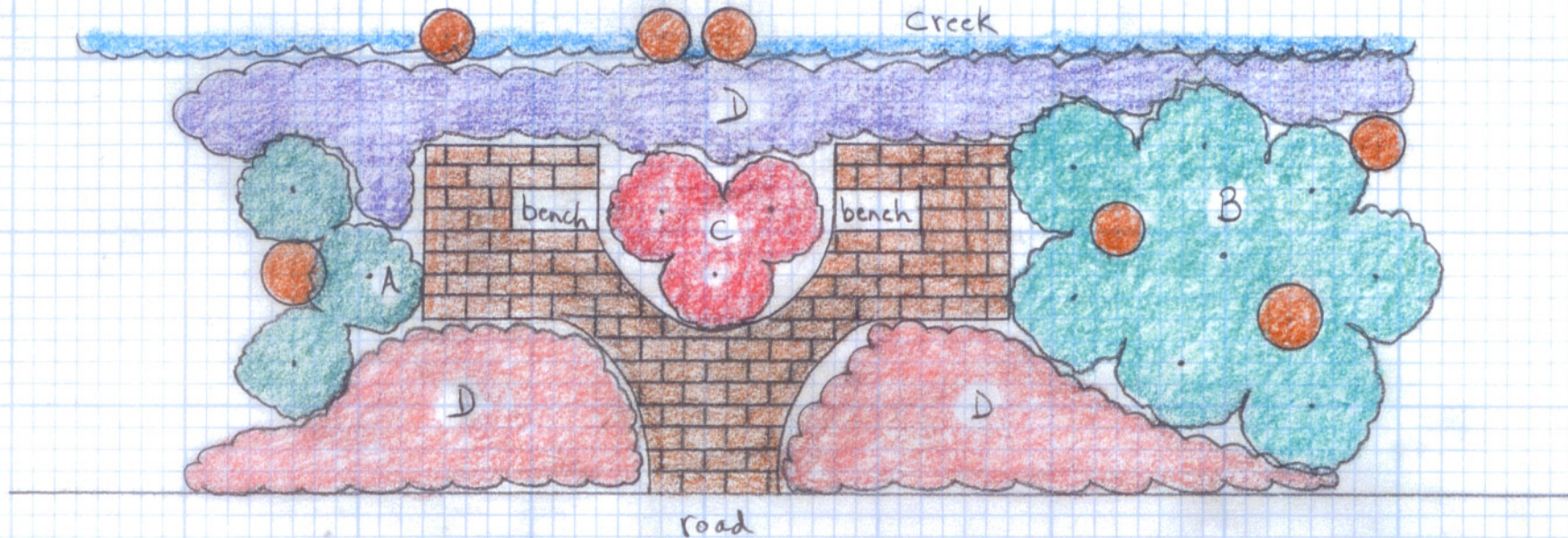


Passion for Mothers Flowers garden



● = existing tree

PLANT LIST

- A.) Viburnum 'Brandywine,' 'Winterthur' or 'Blue Muffin,' 5' apart (3)
- B.) Oakleaf hydrangea 'Snow Queen' or 'Snowflake,' 6' apart (8)
- C.) Summersweet 'Ruby Spice,' 6'x5' (3)
- D.) Seeded annuals, mixed. On creek side, use larkspur, zinnia, ageratum, celosia (cockscomb), marigold, dwarf sunflower, bachelor's buttons, Cosmos, portulaca, annual poppies, Calendula. On shadier road side, use cleome, alyssum, balsam impatiens, nasturtium, love-in-a-mist, johnny-jump-ups, nicotiana, forget-me-not.

Georgweigel